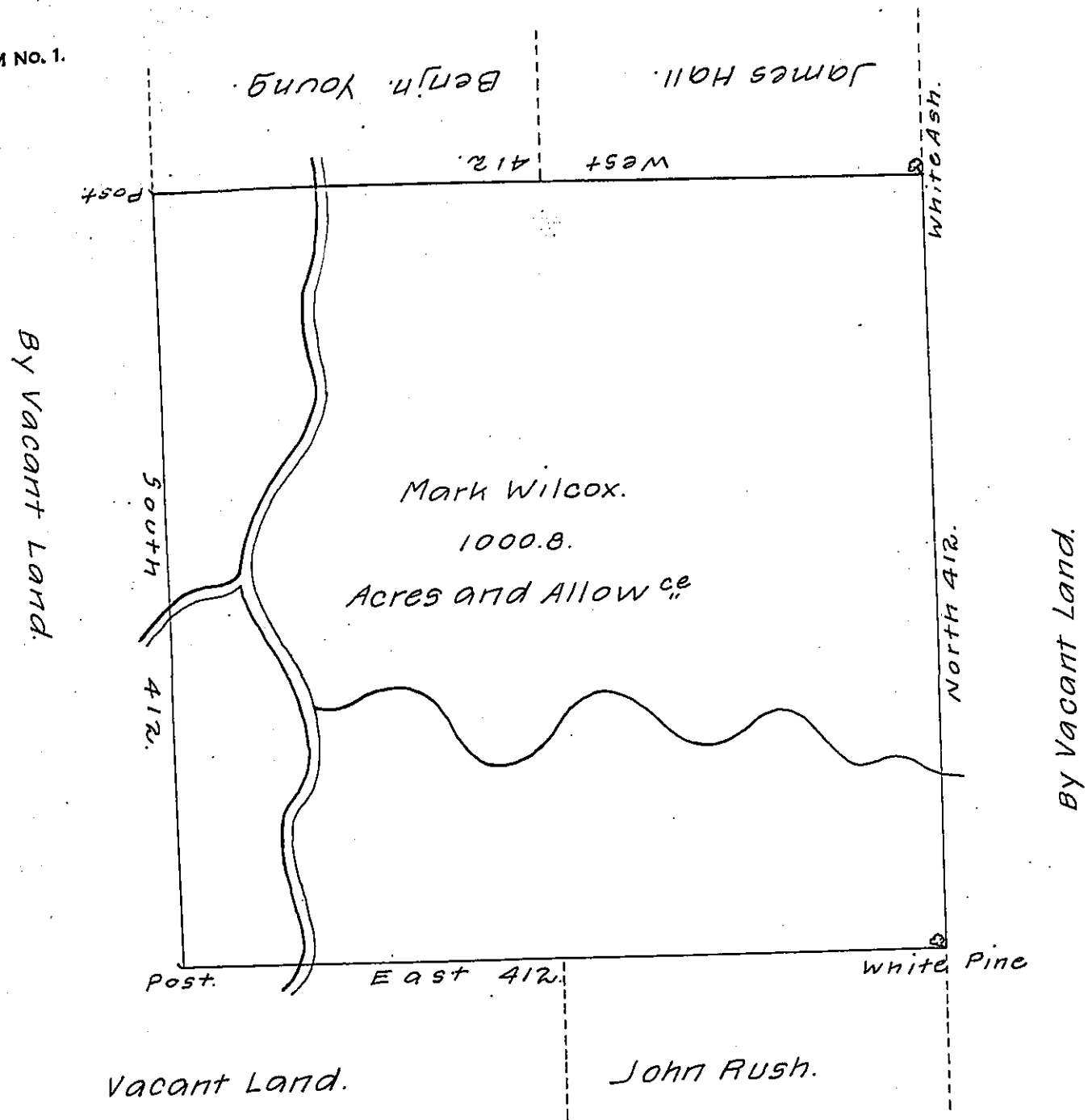


FORM No. 1.



The Draught of a Tract of Land called—situate on the Waters
 of Crooked Creek near the Line between the Districts No 17 & 18
 in the County of Northumberland; containing One thousand Acres
 144 Perches with usual Allowance for Roads. Survey'd the 24th
 day of April Anno Dom 1787. In Pursuance of a Warrant to Mark
 Wilcox dated at Philad^a the seventeenth day of ^{May} ~~April~~ A. D.,
 1785. N^o 437.

P^r Wm. Maclay, D.S.

To John Lukens Esqr, S.G.,
of Pennsylvania.

IN TESTIMONY that the above is a copy of the original remaining on file in
 the Department of Internal Affairs of Pennsylvania, made
 conformably to an Act of Assembly approved the 16th day of
 February 1833, I have hereunto set my hand and caused
 the Seal of said Department to be affixed at Harrisburg,
 this twenty fourth day of May 1907

Henry Houck
 Secretary of Internal Affairs.